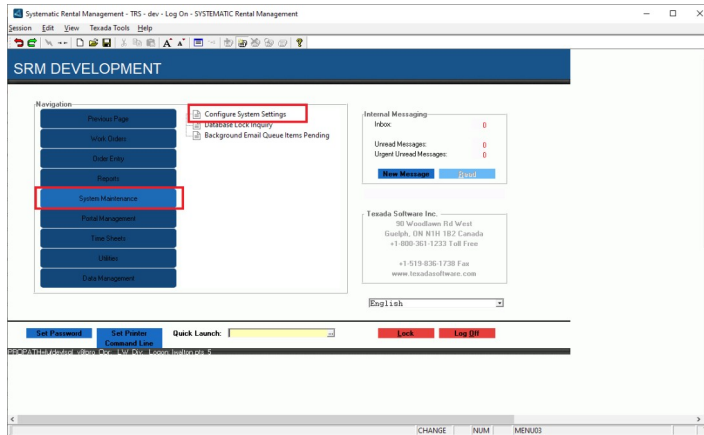
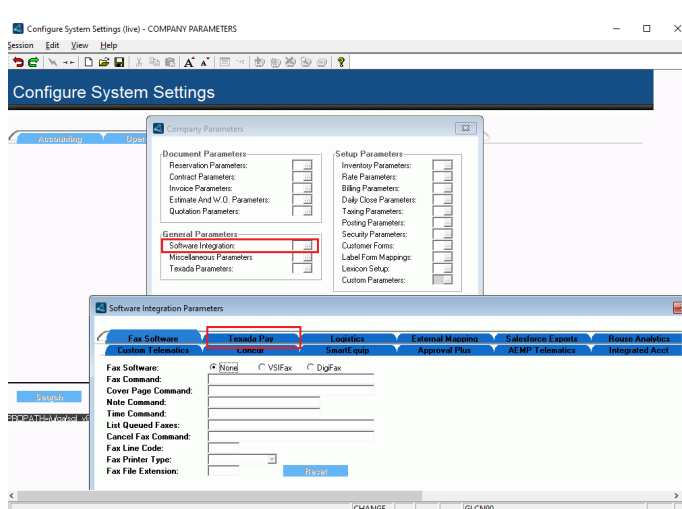
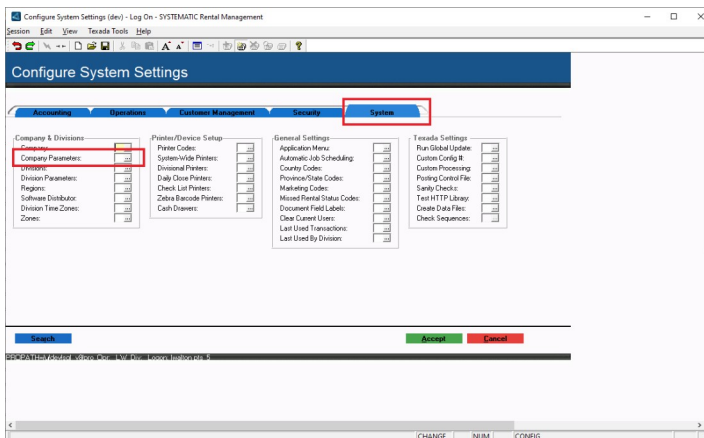


INSTRUCTIONS FOR TEXADA PAY CONFIGURATION

From the main menu, select System Maintenance -> Configure System Settings.



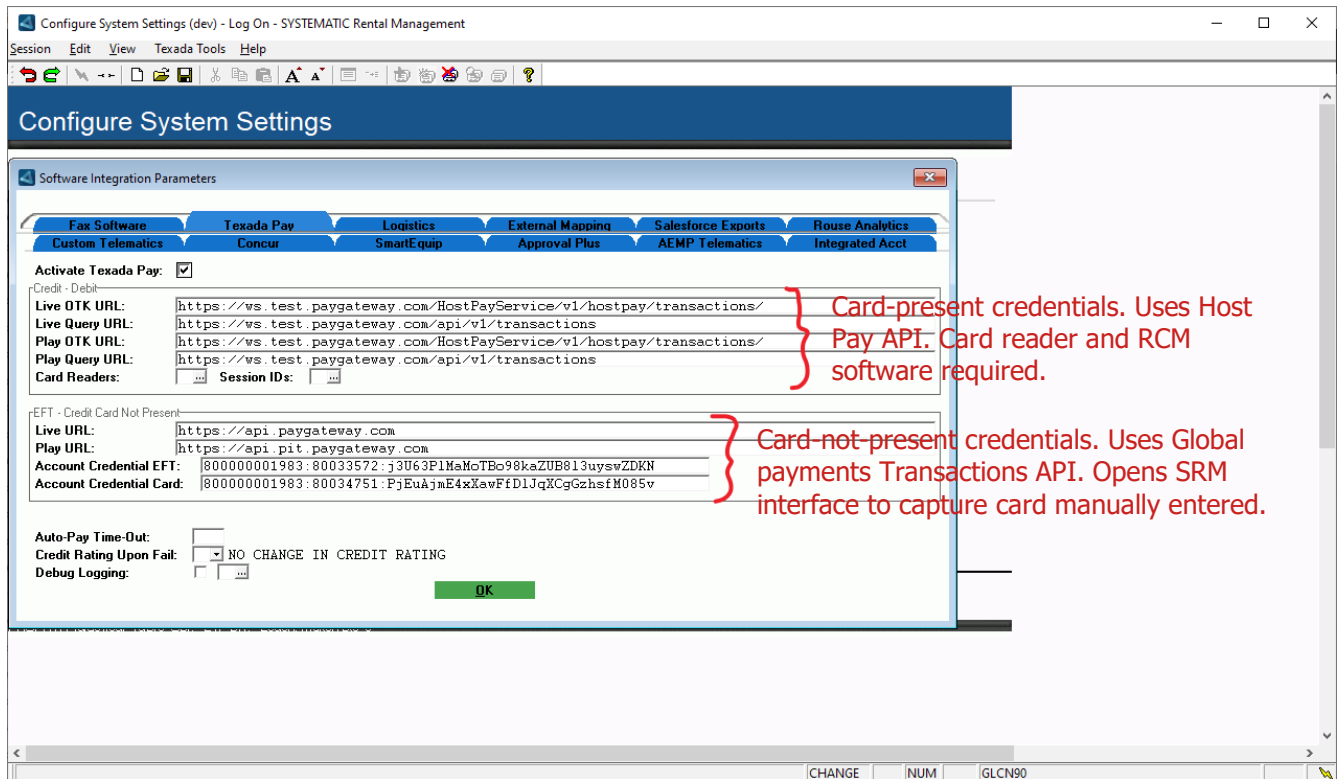
Select the System tab, then window into the Company Parameters:



Window on Software Integration, and click on the Texada Pay tab:

Depending on the Company's currency, a different configuration screen is displayed.

CANADA Configuration:

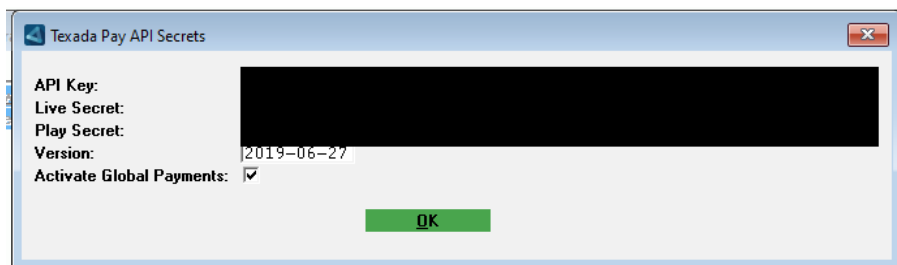


Some customers that still use the Host Pay API for card-not-present (manual entry) transactions, opens an OpenEdge browser window.

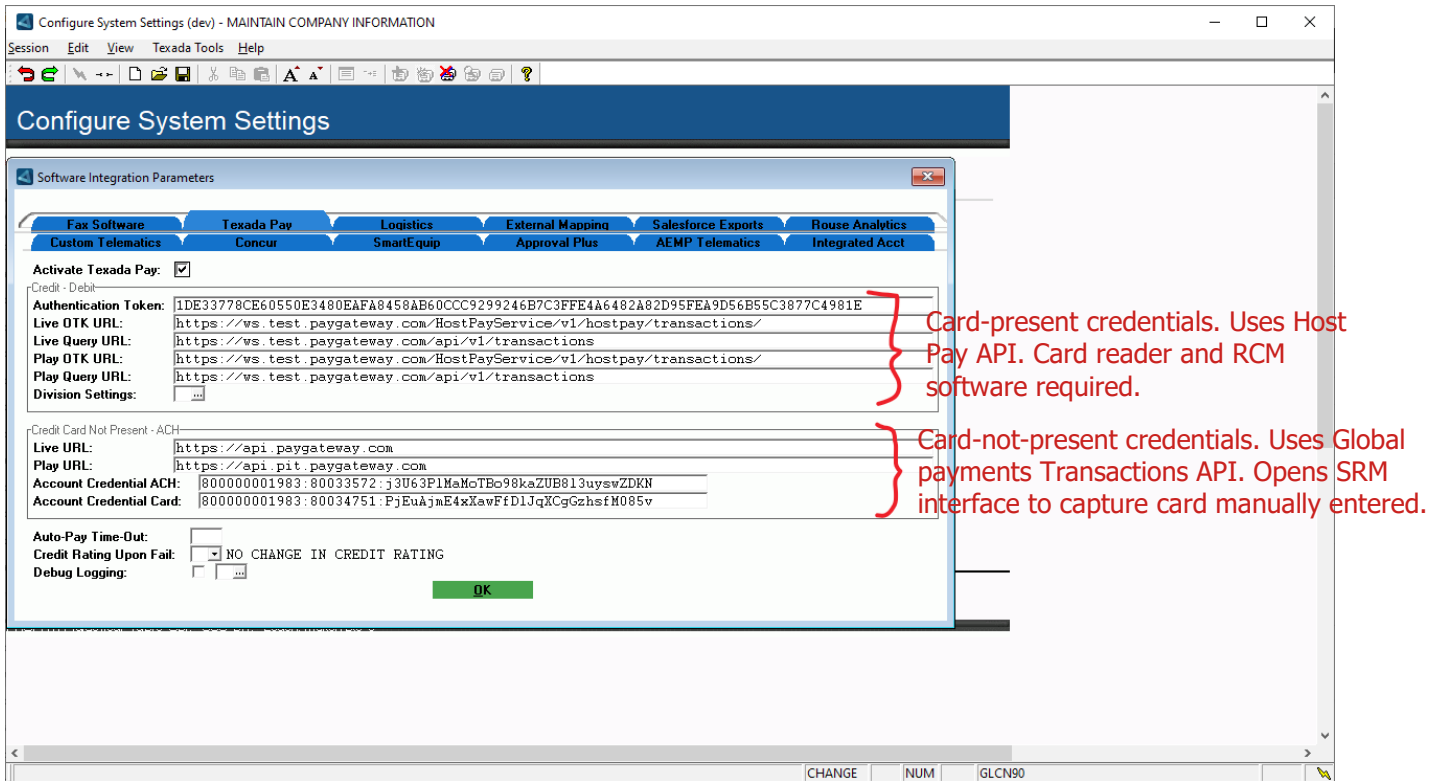
Any new customers should be set up with the new interface and existing ones should be transitioned to this.

The window that opens when the user exits this screen (signed on as SCS) has the API key and secret for the Transactions API.

The Key and Secret are unique to Texada and used by all our customers. It should not be shared with any customers. This window also has an "Activate Global Payments" prompt that needs to be checked to trigger the new interface. If this is not checked, the earlier OpenEdge interface will be triggered.



U.S. Configuration:

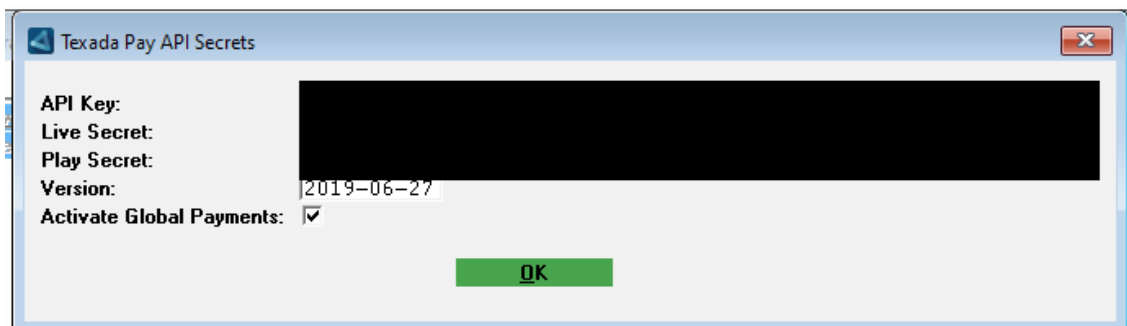


As with Canada, some customers still use the Host Pay API for card-not-present (manual entry) transactions, which opens an OpenEdge browser window.

Any new customers should be set up with the new interface and existing ones should be transitioned to this.

The window that opens when the user exits this screen (signed on as SCS) has the API key and secret for the Transactions API.

The Key and Secret are unique to Texada and used by all our customers. It should not be shared with any customers. This window also has an "Activate Global Payments" prompt that needs to be checked to trigger the new interface. If this is not checked, the OpenEdge interface will be triggered.



In the U.S. configuration screen there is an Authentication Token on the main screen and a Division Settings window.

Unlike Canada, tokens are not linked to the card readers, but they can be linked to a division (optional).

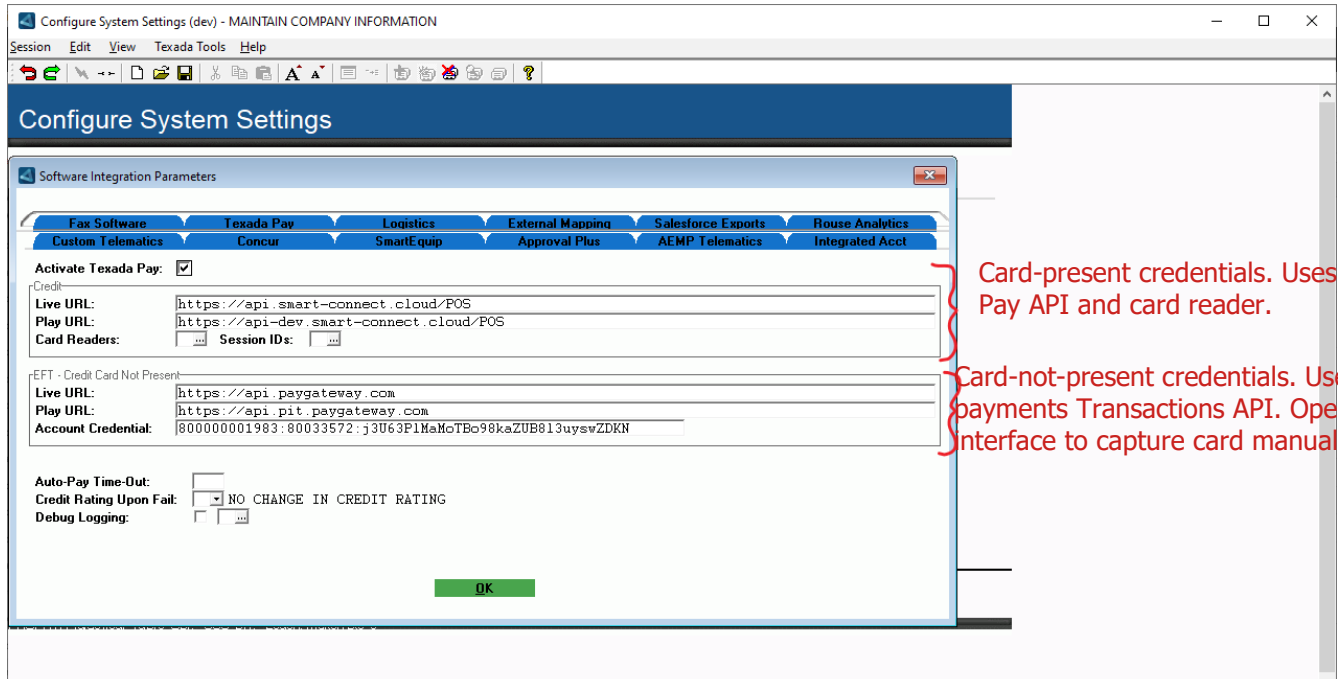
If no token exists at the division level, the token on the main screen will be used.

The screenshot shows the 'Configure System Settings' application window. The main window has a title bar 'Configure System Settings (dev) - MAINTAIN COMPANY INFORMATION' and a menu bar with 'Session', 'Edit', 'View', 'Texada Tools', and 'Help'. Below the menu bar is a toolbar with various icons. The main content area is titled 'Configure System Settings' and contains a 'Software Integration Parameters' section. This section has several tabs: 'Fax Software', 'Texada Pay', 'Lionistics', 'External Mapping', 'Salesforce Exports', and 'Prose Analytics'. Under the 'Texada Pay' tab, there are sub-tabs: 'Custom Telematics', 'Consent', 'SmartEquip', 'Approval Plus', 'AEMP Telematics', and 'Integrated Acct'. The 'Activate Texada Pay' checkbox is checked. Below this, the 'Authentication Token' field is highlighted with a red box and contains the value: '1DE33778CE60550E3480EAF8458AB60CCC9299246B7C3FFE4A6482A82D95FEA9D56B55C3877C4981E'. Below the token field are fields for 'Live OTK URL', 'Live Query URL', 'Play OTK URL', and 'Play Query URL', all containing URLs from 'https://ws.test.paygateway.com'. A blue arrow points to the 'Division Settings' checkbox, which is currently unchecked. A dialog box titled 'Divisional Credit Card Authentication Token' is open in the foreground. It has a table with the following data:

Seq	Div	Name	Authentication Token
001		TRS - Corporate	5B20EACACE64580B348BECF18759AA66CFC9249040B9CBFBE4A24D2B80DE50ED91
002	010	TRS - Guelph	
003	020	TRS - Brisbane	

At the bottom of the dialog box are 'Accept' and 'Cancel' buttons. The status bar at the bottom of the main window shows 'CHANGE', 'NUM', and 'GLCN90'.

AUSTRALIA and NEW ZEALAND Configuration:



The window that opens when the user exits this screen (signed on as SCS) has the API key and secret for the Transactions API.

The Key and Secret are unique to Texada and used by all our customers. It should not be shared with any customers.

This window also has an "Activate Global Payments" prompt that needs to be checked to take card-not-present transactions.

